

# Additional Figures for “Generation Expansion Planning with Revenue Adequacy Constraints”

Cheng Guo<sup>\*1</sup>, Merve Bodur<sup>†1</sup>, and Dimitri J. Papageorgiou, *Member, IEEE*<sup>‡2</sup>

<sup>1</sup>Department of Mechanical and Industrial Engineering, University of Toronto, Toronto, Ontario M5S 3G8, Canada

<sup>2</sup>Corporate Strategic Research, ExxonMobil Research and Engineering Company, Annandale, NJ 08801 USA

## 1 Figures

Figure 1 shows the optimal production profiles and prices from our model, in the small case study, with a price cap of \$50 for the power price.

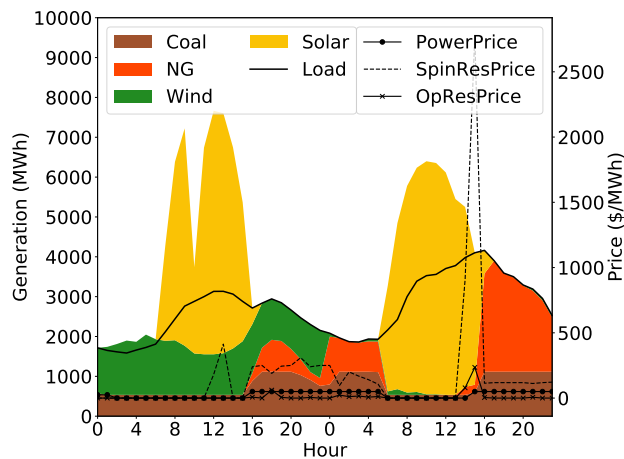


Figure 1: Optimal production profiles and prices of small case study with price caps

---

\*cguo@mie.utoronto.ca

†bodur@mie.utoronto.ca

‡dimitri.j.papageorgiou@exxonmobil.com